



PANORAMA & RENAISSANCE

# OWNER'S MANUAL



## WARNING

**Read this guide thoroughly, it contains important information.  
Keep this Owner's Manual in the Machine Room.**





## **WARNING**

**Your elevator shall be used correctly and be maintained regularly or it could pose a hazard to you and your family.**

## **IMPORTANT NOTES**

This is a private residence elevator as defined in CSA B44/ASME A17.1 safety codes. This elevator is designed for use in a private residence ONLY and not for commercial or public use.

The following shall be observed to ensure safe and reliable operation:

- DO NOT lean on cab doors while inside the cab.
- DO NOT lean on elevator hall doors.
- DO NOT jump up and down inside the cab.
- Children under the age of 16 MUST NOT operate the elevator alone. They MUST HAVE adult supervision while using the elevator.
- Do not exceed the maximum weight that is specified for your elevator.
- Do not use elevator in case of fire.
- If your cab is not equipped with a telephone connected to an outside line, ensure that you have a cell phone with you when using the elevator (especially if you are home alone) in the event of an emergency.
- Always watch your step when entering or exiting the elevator.
- Lock the wheels on your wheelchair while travelling in the elevator.
- Only a trained elevator mechanic shall be responsible for performing maintenance on elevator.
- Manufacturer warning labels should not be removed from elevator.

## **CAUTION**

**DO NOT tamper or attempt to fix the Controller as it could result a risk of electric shock or death. The Controller shall only be serviced by a licensed technician.**

**DO NOT try to forcefully open the hall doors. Elevator should be called by pressing the hall station button to call the elevator to your landing.**





## PANORAMA & RENAISSANCE OWNER'S MANUAL

Congratulations on your purchase of a residential elevator from Federal Elevator. We appreciate your business and are confident that the unit we carefully designed and manufactured will provide you and your family with ease of use for many years.

This Owner's Manual is applicable to our Panorama and Renaissance Models and will provide you with: basic operating procedures, emergency procedures, safety features, warranty and maintenance record. Please review Owner's Manual to learn how to safely use your elevator. Be sure to keep this manual in the machine room so that you are able to easily reference.

ALL CONTENT OF THIS MANUAL IS © FEDERAL ELEVATORS

MAY 2025

### **WARNING**

**It is important for you to familiarize yourself with the contents of this owner's manual.**



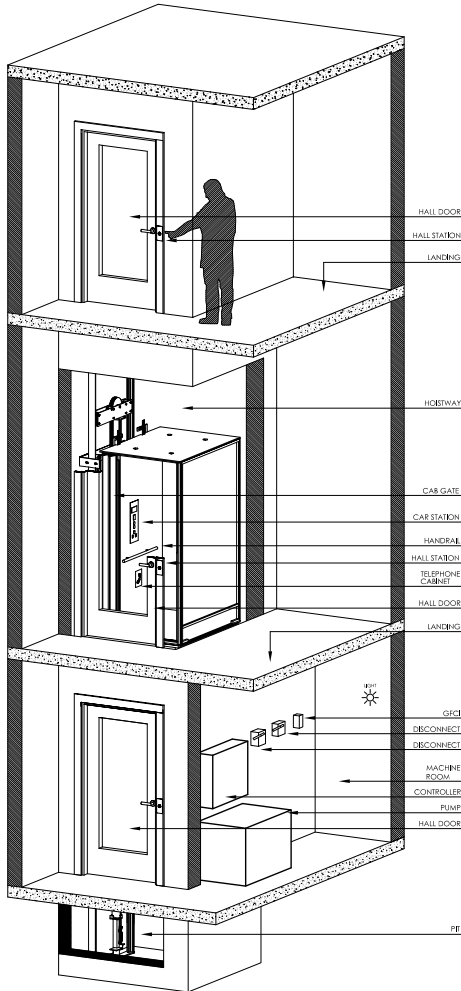
## TABLE OF CONTENTS

- 1 Important Notes
- 5 Roped Hydraulic Drawing
- 6 Car Operating Panel Drawing
- 7 Hall Station Drawing
- 8 Specifications
- 9 Using the Elevator
- 10 What to do in case of a power failure
- 11 Emergency Door Opening Inside the Cab
- 12 Other emergency features that may be activated
- 12 Infrared Light Curtain
- 13 Manual Lowering Device
- 15 Troubleshooting Tips
- 15 Yearly Maintenance Warning (YMW)
- 16 Warranty
- 17 Maintenance
- 18 Notes
- 19 Maintenance Record



## ROPED HYDRAULIC DRAWING

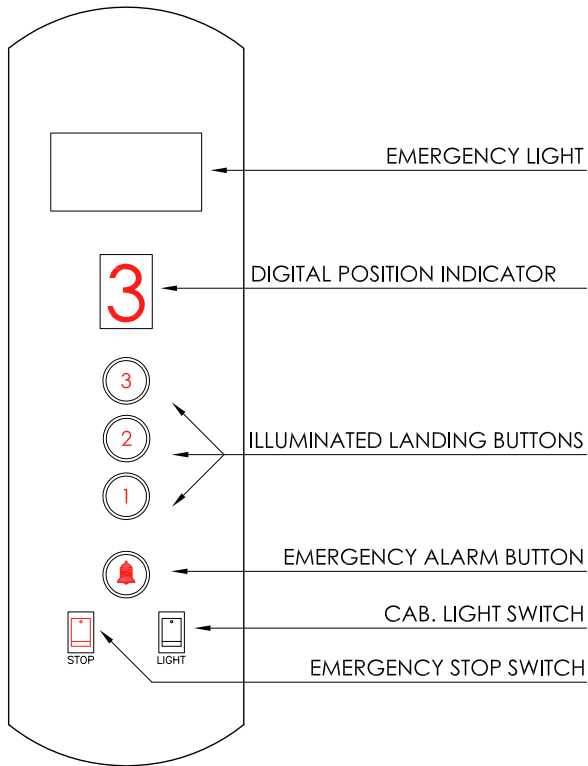
The Diagram below is a representation of your unit. Many of the items that are mentioned in this Manual are labelled below for your reference.





## CAR OPERATING PANEL

Your Residential elevator will be equipped with a Car Operating Panel which is located inside your unit. It will allow you to operate the elevator.

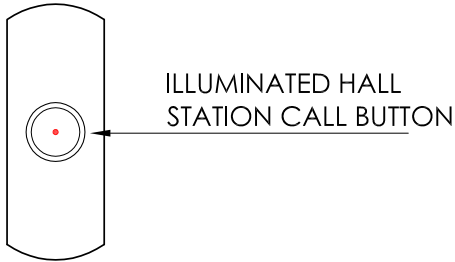


The above drawing represents a 3 stop unit.  
Your unit could differ from above illustration.



## HALL STATION DRAWING

There will be Hall Station Call buttons on all levels that the elevator services. The Hall Station Call button illuminates when a call is registered.



Your unit could differ from above illustration.



## SPECIFICATIONS

<b>RESIDENTIAL ELEVATOR</b>	
Load Capacity	750 lbs. (340 kg.), 1000 lbs. (454 kg.) or 1400 lbs (635 kg.)
Rated Speed	36 feet per minute (0.18 m/s) (Nominal)
Power Supply NOTE: Amperage may vary depending on individual units.	230 volt, single phase, 30 amps or 208 volt, three phase, 30 amps
Drive Systems	1:2 Cable Hydraulic
Standard Cab Sizes	36" x 48" (914.4 mm. x 1219 mm.) 40" x 54" (1016 mm. x 1372 mm.) 36" x 54" (914.4 mm. x 1372 mm.) 42" x 60" (1067 mm. x 1524 mm.) 36" x 60" (914.4 mm. x 1524 mm.) 48" x 60" (1219 mm. x 1524 mm.)
Maximum Travel	50 ft. (15.24 m.)
Cab Door	Manual Accordion Gate (standard) Automatic Accordion Door, Bifold Door, 2 speed doors, 3 Speed Doors
Maximum Number of Stops	6 stops
Pit Depth Required	8" (203 mm.) minimum
Overhead Clearance	96" (2438 mm.) minimum. This measurement is for standard 8' cab with manual accordion door or bifold door. Please contact a representative if you are planning on adding a different cab height or cab gate as this measurement may change.
Control System	Automatic Push Button or Constant Pressure
Floor Selection	Magnetic Selector
Flooring Material	Plywood (Floor to be finished by customer after elevator is installed)
Control Panel Finish	Stainless Steel (standard) Brass or Antique Bronze (optional)
Hall Station Finish	Stainless Steel (standard) Brass or Antique Bronze (optional)
Motor	3 HP (2.24 kW) Other HP could be possible depending on the cab you design
Cab Panel Finish	Unfinished Maple, Unfinished Oak Veneer, Unfinished MDF
Lighting Supply	110 volt, 60 Hz, 15 amp
Standard Features	<ul style="list-style-type: none"><li>■ Automatic Timed ON/OFF Cab Lighting</li><li>■ Stainless Steel Illuminated Hall Buttons</li><li>■ Digital Floor Indicator in Cab (optional)</li><li>■ Emergency Battery Powered Lowering &amp; Lighting</li><li>■ Emergency Stop Button in Cab</li><li>■ Emergency Alarm Button in Cab</li><li>■ Solid Ceiling with Halogen Pot Lights</li><li>■ Stainless Steel Handrail</li><li>■ Stainless Steel Control Panel in car</li><li>■ Electromechanical locks at all door landings (Interlock)</li><li>■ Infrared Light Curtain if elevator is equipped with accordion doors, 2-speed or 3-speed automatic doors</li><li>■ Door open alarm</li></ul>




## **WARNING**


**Improper use or improper maintenance and tampering of elevator can cause severe injury or death.**

## **USING THE ELEVATOR**

1. Call the elevator to your desired floor by pressing the Hall Station Call button. Your call has been registered when the light illuminates.
2. The interlock with energize and allow you to open the hall door once the elevator is at your landing.

 **NOTE: Be aware that the lights in your cab are on a timer. They will turn on once the elevator is called and the hall door has been opened. The lights will automatically shut off 5 minutes after hall and car doors are closed.**

3. If you have manual gates, open the cab gate and enter. If you have automatic gate, enter the cab when it fully opens.
4. If you have manual gates, close the hallway door first and then ensure that the cab gate is fully closed. Automatic doors will close on their own.
5. Choose your desired level by pressing it on the Car Operating Panel.
6. The elevator will stop and the doors will open at your chosen level.
7. If you have manual gates, open them first and then open the hall door. Automatic gates will open on their own, once they do, you are able to open your hall door.
8. Exit the elevator.

 **NOTE: It is important to ensure that you always close the manual gates and hallway doors as the elevator will not register a call if any of the doors remain open.**



## **CAUTION**



**DO NOT try to forcefully open the hall doors. Elevator should be called by pressing the hall station button to call the elevator to your landing.**



## WHAT TO DO IN CASE OF A POWER FAILURE:

1. Remain calm.
2. Should the elevator lose power while you are inside, the emergency battery backup power will energize and will turn on the emergency light located in the Car Operating Panel, it will illuminate and provide light inside the cab.
3. The elevator can only travel in the down direction. Choose your desired landing accordingly by simply pressing the button on your Car Operating Panel.
4. Once your elevator arrives at that location, one of the following will occur depending on the type of door you have:  
A) Manual gates will require you to open them so that you may access the hall door.  
B) Automatic gates will open at that floor by themselves.
5. The Interlock will energize allowing you to open the hall door to exit the elevator.

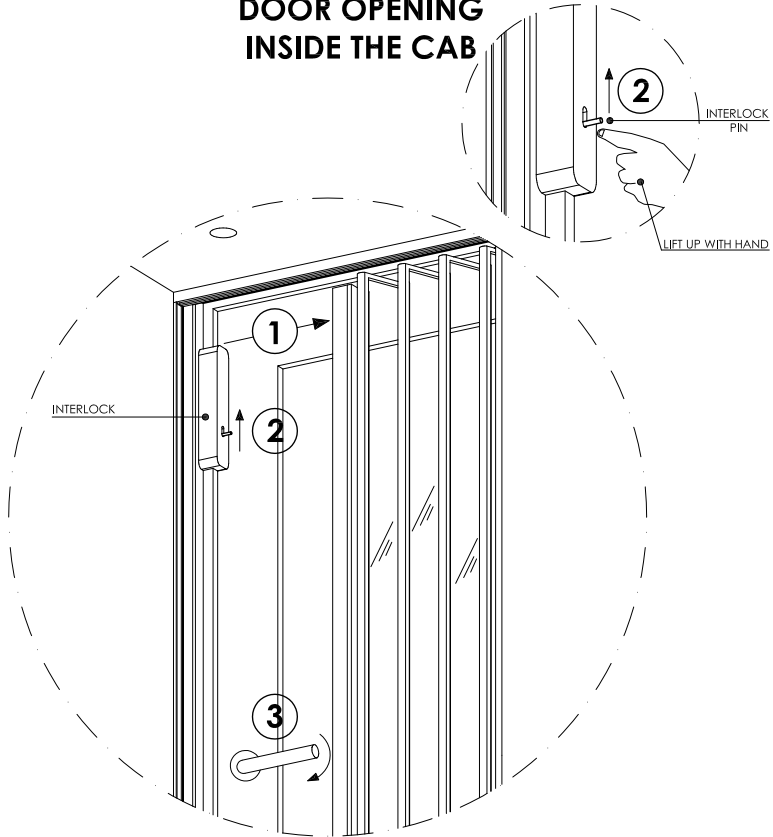
### **WARNING**

**If the elevator is stopped between floors, DO NOT attempt to exit without the help of an elevator technician. Ignoring this warning could result in serious injury or death.**

 **NOTE:** Should the Interlock NOT energize, you will need to lift up the interlock pin in the upward direction allowing the lock to manually open. Please refer to Figure 1 on page 9.



## EMERGENCY DOOR OPENING INSIDE THE CAB



EMERGENCY DOOR OPENING FROM INSIDE THE CAB:

- 1- PULL AND OPEN THE ELEVATOR GATE
- 2- LIFT UP INTERLOCK PIN
- 3- OPEN HALL DOOR TO EXIT

Figure 1



## OTHER EMERGENCY FEATURES THAT MAY BE ACTIVATED:

- Press Emergency Alarm Button on your Car Operating Panel to sound the alarm to alert others nearby that you require help.
- Use the emergency phone (if applicable) within the cab to call 911 or the elevator maintenance contractor.

**NOTE:** If your cab is not equipped with a telephone connected to an outside line, ensure that you have a cell phone with you when using the elevator (especially if you are home alone) in the event of an emergency.

## INFRARED LIGHT CURTAIN

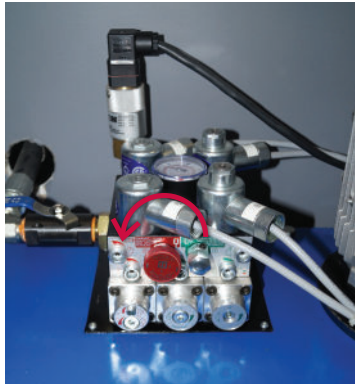
Elevators with manual gates will be equipped with an infrared light curtain which is part of the residential elevator safety features. This mechanism runs adjacent to the manual gate and acts as an invisible shield at the entrance of the cab. The elevator will not travel if the path of the lasers are broken as this is considered an unsafe condition. The elevator will resume normal function within 5 seconds once the area is clear.

**NOTE:** Should you accidentally obstruct the path of the laser while the elevator is moving, it will automatically stop. The elevator will resume travelling 5 seconds after the obstruction has been removed.



## MANUAL LOWERING DEVICE

**NOTE:** You shall only use the following feature under an extreme emergency when a passenger becomes entrapped. Care should be taken when using the manual lowering device to ensure safe operation.



**Figure 2**

This safety feature located on the pump unit allows the mechanic to move the car in the down direction if the elevator is not functioning in normal operation. Turning the dial in the counter clockwise direction will lower the elevator at a much slower speed. This device is spring loaded so that if the dial is no longer turned, it will stop the function will stop immediately. The cab can be moved to a lower level from the Machine Room by using the procedures, on the following page.

1. Communicate to the passenger within the elevator and assure them to remain calm while you proceed with the manual lowering feature.
2. If the elevator has manual gates, ask the passenger to open them and expose the hoistway so that they can see where in the hoistway the elevator has stopped. Ask them to advise you how far away they are located from the next lowest landing.



3. Ask the passenger to stay well back from the opening of the elevator.

**NOTE: If the elevator is equipped with automatic gates, they will open by themselves.**

4. Go to the Machine Room as you need to access the elevator pump unit to perform this feature.
5. Locate the red manual release knob on the pump unit and turn the knob in a counter-clockwise direction to lower the cab. Refer to Figure 2 on page 11.
6. Begin to turn the knob in the counter-clockwise direction but **do not maintain constant pressure**. Begin to turn the knob intermittently to provide a slower decline and to allow the passenger to continually confirm their location until they reach the lower landing.



**CAUTION**



**Failure to lower the cab in a slow and intermittent nature could pose risk of damaging the elevator and harming the passenger.**

7. When you have lowered the cab to the desired landing, go to that landing so that you can assist the passengers away from the elevator if necessary.

**NOTE: If the door and Interlocks do not open, the person within the elevator will need to open doors by pulling them off to the side and by pulling the pin in the Interlock in the up direction. Refer to Figure 1 Step 2 on page 9.**

7. When the passenger exits the elevator, ensure that the cab gates and hall doors are closed.
8. Contact your elevator maintenance company immediately to arrange for a service call as this procedure will misalign your elevator.



## TROUBLESHOOTING TIPS

If your residential elevator is not responding to your call on the hall station, please try the following:

- Check that your manual car gate is securely closed.
- Check that the hall doors at all landings are securely closed.
- Ensure that the Emergency Stop button located on your Car Operating Panel is not in the off position.
- Ensure that both power disconnects in your machine room are in the ON position.

If your elevator is still not responding after completing the troubleshooting tips, contact your maintenance company to schedule a service call.

## YEARLY MAINTENANCE WARNING (YMW)

An elevator is a mechanical piece of equipment that requires continuous maintenance to ensure that all critical safety components are in working order. If the elevator has not been maintained by a technician 1 year after turnover and every year after that, the Car Operating Panel (inside the elevator) and hall buttons on all levels lights will flicker. This warning is a visual reminder that your elevator requires an annual service appointment.

You are able to do a temporary reset for 30 days by pressing and holding down the lower level cab floor button in the Car Operating Panel (inside the cab) for 20 seconds but the flickering will come back after 30 days.

Yearly reset can be done by making an appointment with a technician who will be able to assess the overall safety of the elevator.




## WARRANTY

The warranty starts on the date when the elevator was shipped from the Federal Elevator plant. Please refer to your signed contract to confirm the length of time your unit will be covered. We will make good and/or replace, if necessary, any and all defects due to imperfect workmanship which may appear during the warranty period. These defects, and the repairs required, will be solely determined by Federal Elevator upon receiving at its place of business the piece deemed to be defective by the owner.

This warranty does not cover damages caused by normal wear and tear, accident, fire, unauthorized alterations, vandalism, wilful damage, negligence, acts of God, or other like causes. This warranty shall be considered null and void unless the elevator is maintained properly and consistently by a registered elevator mechanic in the province/state where the elevator is located. Such maintenance shall be performed in accordance with Federal Elevator's recommendations and the requirements of the province's acts and regulations.

### ATTENTION

- Elevator hoistways are restricted spaces and only trained elevator tradespeople should access them.
- Access to hoistway by untrained persons can lead to severe injury or death.
- Any modifications or additions to hoistway performed without Federal Elevator involvement after the elevator is turned over will result in the voiding of any current warranties.

 **NOTE: Units purchased through one of our recognized Dealers will have the same terms as stated in the above warranty but with a time period of one (1) year ONLY. Customer may arrange for a longer warranty period however, this MUST be done prior to the unit being shipped from the Federal Elevator plant.**



## MAINTENANCE

Elevator passenger safety is the result of countless details in the equipment's design, manufacture and installation. After installation, reliable operation and continued assurance of safe operation requires regular maintenance and service to be carried out at least once per year, or more frequently where usage or environment dictates or as required by local jurisdiction. The owner is responsible to ensure regular service and inspections by licensed elevator technicians.

The Residential Elevator must be installed, maintained and serviced by **an authorized FEDERAL ELEVATOR representative ONLY!**

Under no circumstances is anyone other than a trained and authorized Federal Elevator Dealer to install, adjust, maintain, service or modify any mechanical or electrical devices on this lift. Failure to follow this warning can result in safety systems being compromised, which can result in serious injury or death. Federal Elevator Systems Inc. accepts no liability for property damage, warranty claims or personal injury, including death, in this circumstance.

If you purchased your elevator through one of our Dealers, please have them fill out the information below for future reference.

FOR OWNER'S RECORDS	
Customer Name:	_____
Installing Dealer:	_____
Dealer's Telephone Number:	_____
Date Installed:	_____
Serial/F Number: F-	_____

 **WARNING** 

**Elevator shall be maintained by an authorized technician.**











DESIGN | ENGINEER | MANUFACTURE | INSTALL



**FEDERAL  
ELEVATOR**

**Federal Elevator**

1090 Lorimar Drive  
Mississauga, ON L5S 2A1

**Tel** 905.458.4015  
1.888.785.5438



[www.federalelevator.com](http://www.federalelevator.com)